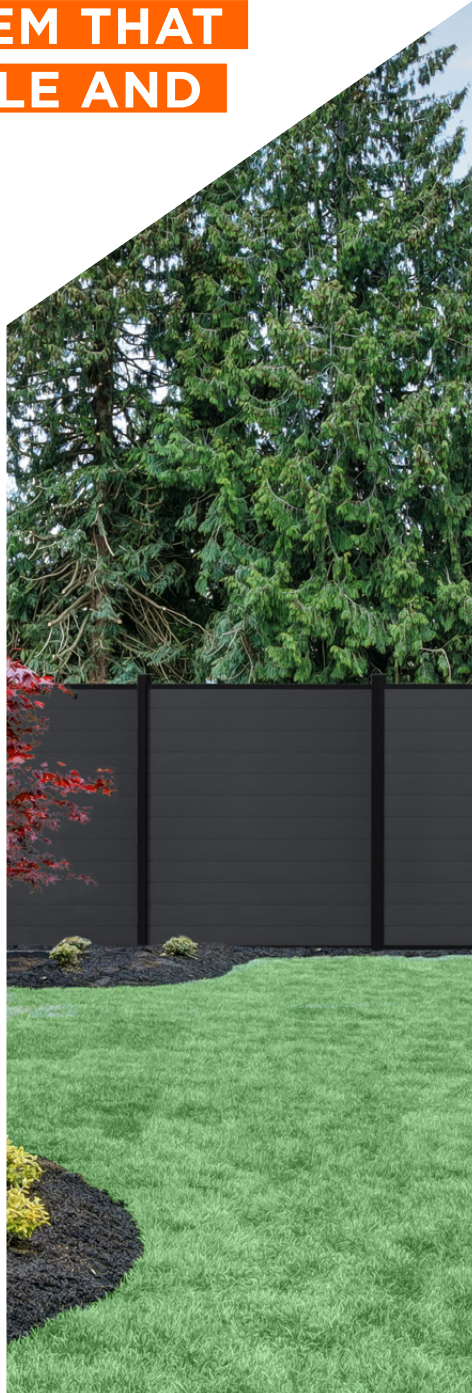




**A LOW MAINTENANCE
FENCING SYSTEM THAT
COMBINES STYLE AND
DURABILITY**

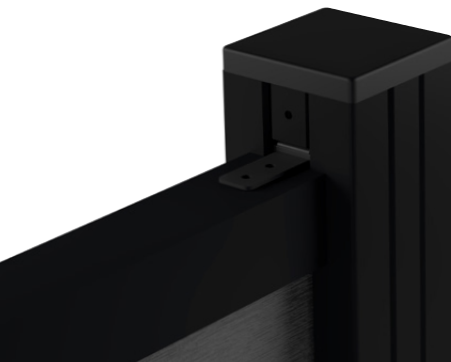
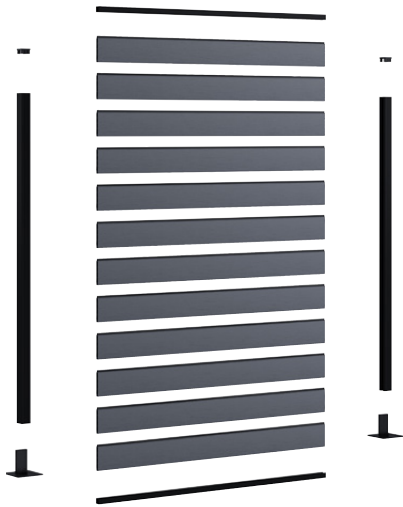
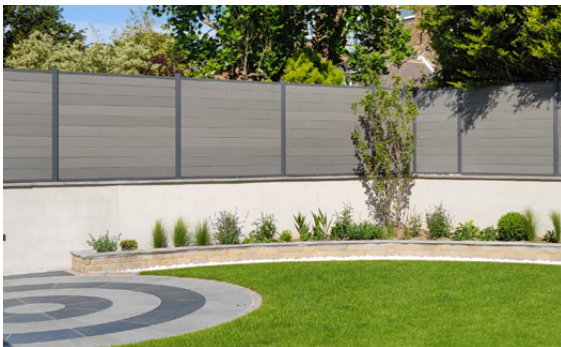


PRODUCT BROCHURE



Bison Composite Fencing combines strength, durability and style in an innovative yet easy to install system

5 KEY BENEFITS OF COMPOSITE FENCING



The mark of responsible forestry

1. IT'S COST-EFFECTIVE

Unlike wooden fencing, **Bison Composite Fencing** won't deteriorate and need regular maintenance. Our composite fencing is fade resistant due to its strong UV resistance and won't rot or splinter, meaning no painting, staining and very little maintenance throughout its life expectancy, which will far exceed its industry leading 20 year manufacturer warranty.

2. IT'S HARD-WEARING

The Bison fencing system uses powder coated aluminium posts that won't twist or warp like timber posts, making the system far stronger and able to withstand all elements better than traditional fencing. The structured WPC fencing planks are likewise extremely strong, being a composite material they don't absorb water and won't warp, neither will they provide conditions that promote fungal & mould growth which timber fencing does.

3. IT'S EASY TO INSTALL

Bison fencing is a well-designed system with minimal components to ensure an easy and fast installation. Once your fence posts are set, the rails and planks slot easily into place which makes it simple to install for both DIY enthusiasts & experienced trade professionals.

4. IT'S UNIQUE

Bison is unlike most other composite fencing systems in that it isn't restricted to straight or right-angled fence lines. Our unique angled post trims allow your fence to be set at either 135° or 157° to help follow the boundary of your property instead of squaring it off, making the most of your garden space. Bison Fencing planks can also be layered with a horizontal gap in between to afford a view of your surroundings without spoiling your privacy.

5. IT'S ENVIRONMENTALLY FRIENDLY

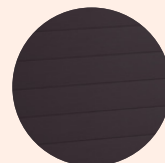
Bison composite fence planks are made from 95% recycled materials (a combination of recycled wood fibres and plastic) All posts and rails are made of aluminium.

3 COLOUR FINISHES

Available in
3 colours



COFFEE



CINDER



STONE GREY

THE COMPLETE FENCE PANEL KIT COMPONENTS

To achieve a 1.825 (6ft) run of fencing

WITHIN THE FENCE PANEL KIT:

4 x Packs of Fence Planks
(12 planks total)

1 x Fence Post Kit

Note that an additional fence post kit is required to finish the end of fence run.



OPTIONS

COLOUR

1900mm post with Coffee planks
BFIFENCEKIT1900-CO



2700mm post with Coffee planks
BFIFENCEKIT2700-CO



1900mm post with Cinder planks
BFIFENCEKIT1900-CI



2700mm post with Cinder planks
BFIFENCEKIT2700-CI



1900mm post with Stone planks
BFIFENCEKIT1900-ST



2700mm post with Stone planks
BFIFENCEKIT2700-ST



All aluminium posts and trims are supplied in graphite grey powder coated finish. (RAL Colour 7024)

THE FENCE POST KIT

OPTIONS:

2700mm long post kit (for burying)
BF1POSTKITN-2700

**1900mm long post kit (for hard standing surfaces -
requires additional post base)**
BF1POSTKITN-1900

In Graphite Grey Aluminium - RAL colour 7024

**1 x Long
Fence Post**



**2 x Post Infill
Section**



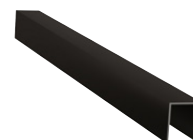
**1 x Plastic
Post Cap**



**2 x L-Link Post
Brackets with Screws**



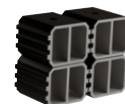
**1 x Aluminium
Top Rail**



**1 x Aluminium
Bottom Support Rail**



**4 x Infill Packer
Pieces with Screws**



Images not to scale

**SWATCHES
AVAILABLE**

Can't decide on a colour?

Order a sample box via our website
at www.bisonsystems.co.uk





BISON
COMPOSITE FENCING

Most 6ft fence runs will be achieved with the use of Fence Panel Kits and an additional post kit

Bespoke height fences or fences with gapping can also be achieved by ordering components separately

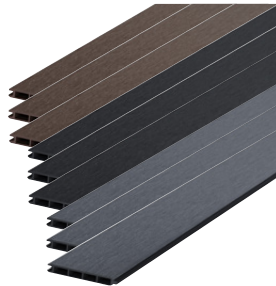
ADDITIONAL COMPONENTS

Fencing Planks (x3)

Pack of 3 planks
1800mm long

Colours available:

Coffee BF1PLANK-CO
Cinder BF1PLANK-CI
Stone BF1PLANK-ST



Fence Post (Standalone)

Graphite Grey Fence post in either 1.9m or 2.7m height

1900mm BF1POST-1900
2700mm BF1POST-2700



Aluminium Post Infill (x2)

To fill other sides of the fence post to make it tidy

1900mm long BF1FILL



Aluminium Angled Post Infill Trim 135°

To create an angled fence line 135° Degree 1900mm long trim to change the angle of the fencing

BF1ANGLE-135



Aluminium Angled Post Infill Trim 157°

To create an angled fence line 157° Degree 1900mm long trim to change the angle of the fencing

BF1ANGLE-157



Aluminium Top Rail BF1TOPRAIL



Aluminium Bottom Support Rail BF1BOTSUPRAIL



Plastic Post Cap BF1CAP

To finish the top of the post



Fence Post Base

To install the post on to concrete. (not included in post kits) BF1BASE



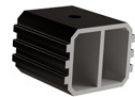
L-Link Post Bracket (x2) BF1LINK

To secure horizontal rails



Post Infill Packer Piece (x4)

To fill the groove on the inside of the posts at the bottom and top of the fencing BF1PACK



Bison Gate Unit

Aluminium framed door with composite fencing inserts. Comes complete with lockable handle, 2 keys and heavy duty nylon hinges.

1800mm x 1000mm
Available in 3 colours

Coffee
BF1GATE-CO

Cinder
BF1GATE-CI

Stone Grey
BF1GATE-ST

Images not to scale



FOR MORE INFORMATION

For more information on composite fencing or our other products visit www.bisonsystems.co.uk
Tel: 01342 337 160 email: info@bisonsystems.co.uk



The mark of responsible forestry

