

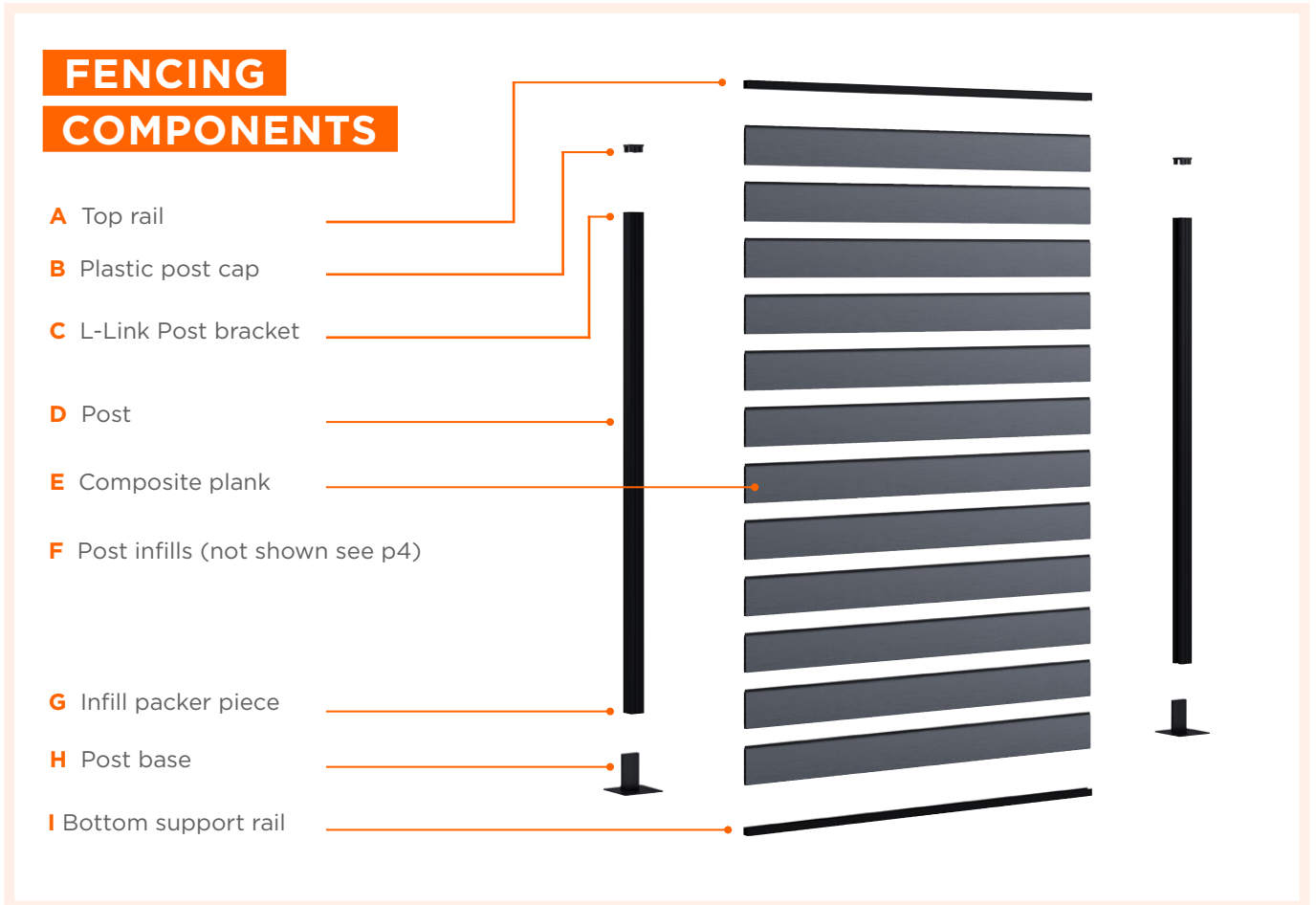


COMPOSITE FENCING INSTALLATION GUIDE



PRODUCT BROCHURE

Bison fencing is a well-designed system with minimal components to ensure an easy and fast installation

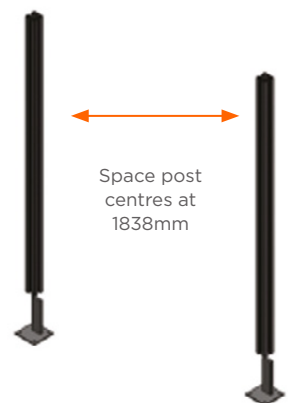


1. POSTS (D)

BURIED - Posts need to be buried to a depth allowing a minimum of 1925mm above ground for a full height fence. Post centres must be 1838mm apart for correct distancing which allows for expansion of composite fence planks.

HARD STANDING - Post Bases (**H**) to be mechanically fixed to hard standing surfaces (fixings not supplied). Ensuring 1838mm post centres. This will allow for expansion of composite fence planks.

NOTE: Build up of 12 fence planks is equal to 1815mm.



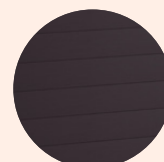
Buried to a depth that allows for 1925mm of the post above the ground

3 COLOUR FINISHES

Available in 3 colours



COFFEE



CINDER

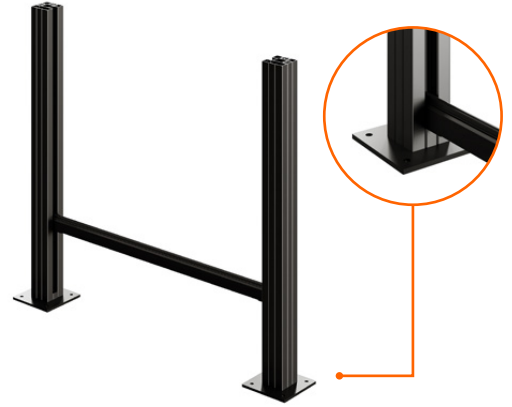


STONE GREY



2. BOTTOM SUPPORT RAIL (I) AND INFILLS (G)

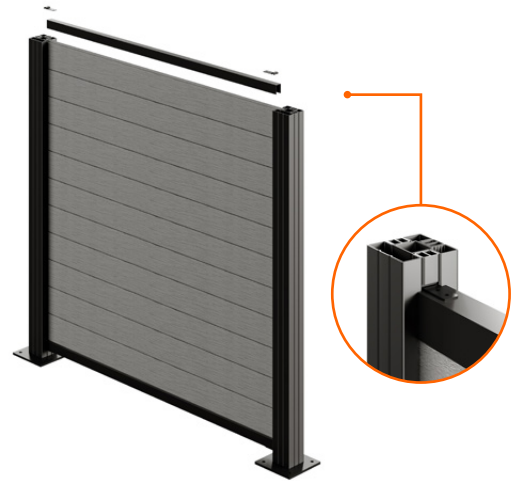
Insert Infill Packer Pieces (G) down the post channel to sit at the base of each post (D). Slide bottom support rail (I) down the post channels (D). Ensure bottom support rail (I) is level by adjusting and fastening infill packer pieces (G).



3. PLANKS (E) AND TOP RAIL (A)

Insert planks (E) one by one down the post channels until desired height is reached.

To finish the top plank, place the top rail (A) on your final plank and fasten with the L-Link post brackets (C) which insert down the post channel and fixed with screws to the post (D) and top rail (A).



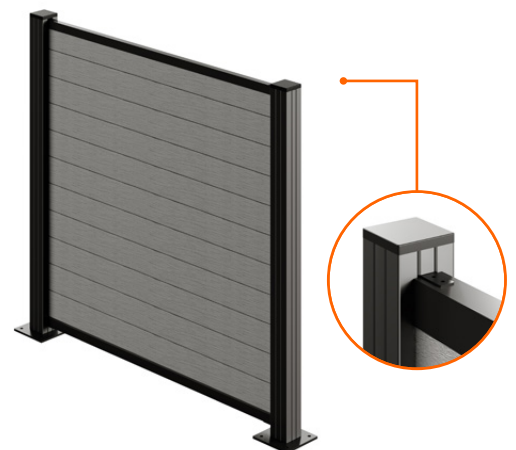
4. FINISHING TOUCHES

Insert full length post infills (F) into open channels of the post (D). Infill Packer Pieces (G) can be inserted above the top rail (A) if required.

Finish post by inserting post cap (B).

Need more advice?

For advice on fitting a fence with horizontal gaps or using angle post trims please contact us.



**SWATCHES
AVAILABLE**

Can't decide on a colour?
Order a sample box via our website
at www.bisonsystems.co.uk



Bison Composite Fencing combines strength, durability and style in an innovative yet easy to install system

TECHNICAL SPECIFICATION

A

Aluminium Top Rail

1770mm x 30mm x 22mm
0.57kg each



B

Plastic Post Cap

68mm x 68mm
0.3kg



C

C - L-Link Post Bracket (x2)

To secure horizontal rails
BF1LINK



D

Aluminium Post

1900mm x 68mm x 68mm
2700mm x 68mm x 68mm
4.81kg/4.27kg

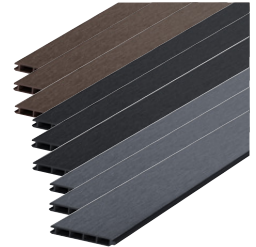


E

Composite Fence Plank

1800mm x 162mm x 20mm
3.42kg per plank

Packs of 3 planks



F

Aluminium Post Infill

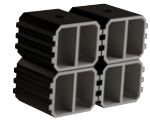
1900mm x 30mm x 22mm
1.05kg each 2 per pack



G

Infill Packer Piece

4 per pack with screws.
Colour Graphite Grey
30mm x 20mm x 17mm



H

Aluminium Post Base

150mm x 150mm x 230mm (shaft)
3kg



I

Aluminium Bottom Support Rail

1800mm x 47mm x 20mm



Images not to scale

Supported by bison's 20-year warranty

Unlike wooden fencing, Bison Composite Fencing won't deteriorate and need regular maintenance.

Our composite fencing is fade resistant due to its strong uv resistance & won't rot or splinter, meaning no painting, staining and very little maintenance throughout its life expectancy, which will far exceed its industry leading 20 year manufacturer warranty.



FOR MORE INFORMATION

For more information on composite fencing or our other products
visit www.bisonsystems.co.uk
Tel: 01342 337 160 email: info@bisonsystems.co.uk



The mark of
responsible forestry

